

PRODUCT INFORMATION PACKET

Model No: 182TCDW7318
Catalog No: Z406A
3,3600,DP,182JM,1/60/115/230
JM



Regal and Marathon are trademarks of Regal Beloit Corporation or one of its affiliated companies.
©2018 Regal Beloit Corporation, All Rights Reserved. MC017097E





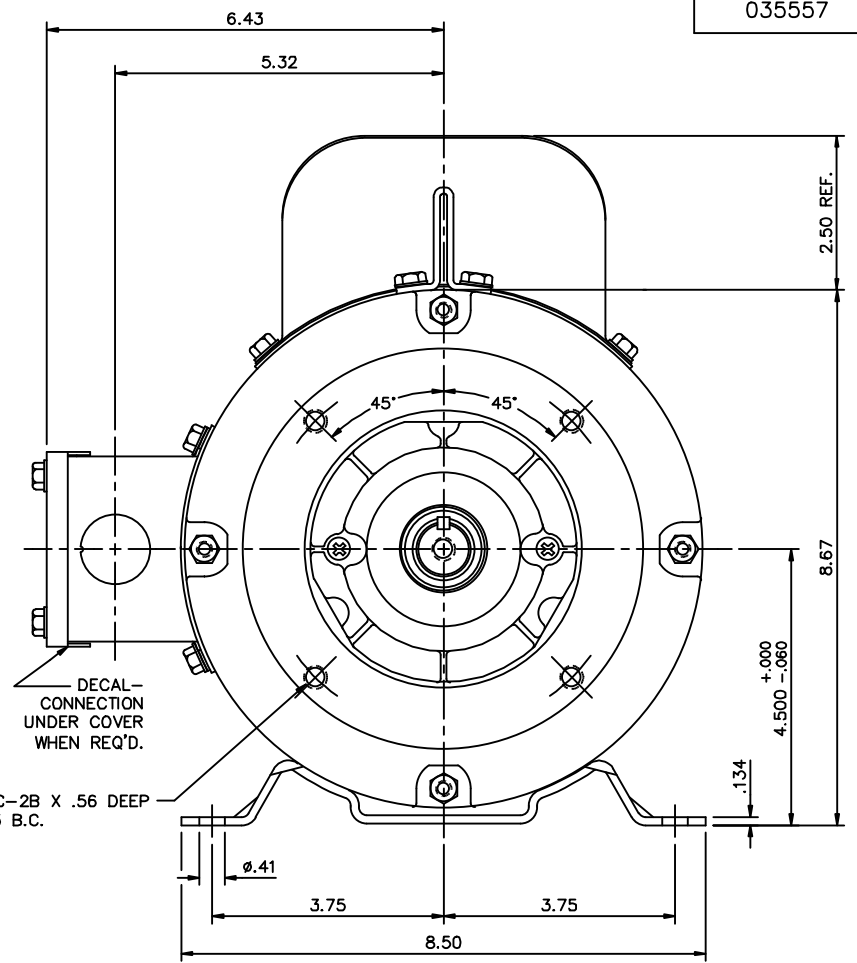
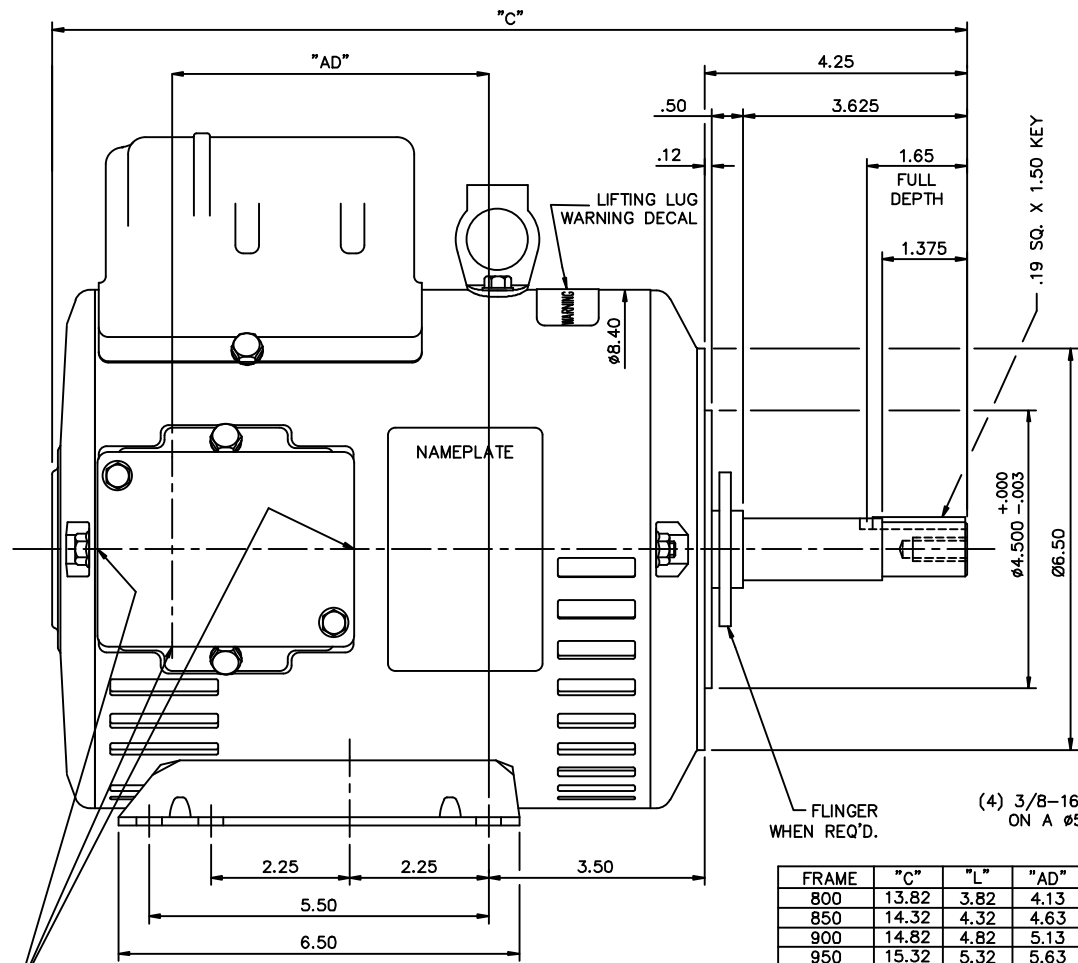
Nameplate Specifications

Output HP	3 Hp	Output KW	2.2 kW
Frequency	60 Hz	Voltage	115/230 V
Current	32.0/16.1 A	Speed	3500 rpm
Service Factor	1.15	Phase	1
Efficiency	75.5 %	Duty	Continuous
Insulation Class	F	Design Code	L
KVA Code	G	Frame	182JM
Enclosure	Drip Proof	Overload Protector	No
Ambient Temperature	40 °C	Drive End Bearing Size	6207
Opp Drive End Bearing Size	6205	UL	Recognized
CSA	Y	CE	Y
IP Code	22		

Technical Specifications

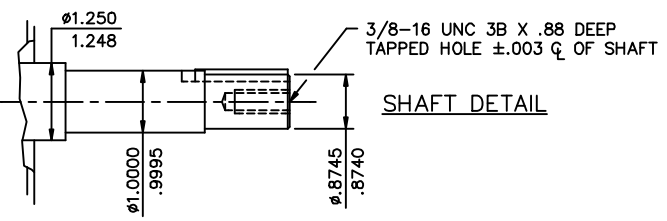
Electrical Type	Capacitor Start Induction Run	Starting Method	Across The Line
Poles	2	Rotation	Selective Counterclockwise
Mounting	Rigid base	Motor Orientation	Horizontal
Drive End Bearing	Ball	Opp Drive End Bearing	Ball
Frame Material	Rolled Steel	Shaft Type	JM
Overall Length	15.32 in	Frame Length	9.50 in
Shaft Diameter	0.875 in	Shaft Extension	4.25 in
Assembly/Box Mounting	F1 Only		
Outline Drawing	035557-950	Connection Diagram	005062.01ME

This is an uncontrolled document once printed or downloaded and is subject to change without notice. Date Created: 06/29/2018



FRAME	"C"	"L"	"AD"
800	13.82	3.82	4.13
850	14.32	4.32	4.63
900	14.82	4.82	5.13
950	15.32	5.32	5.63
1000	15.82	5.82	6.13
1050	16.32	6.32	6.63
1100	16.82	6.82	7.13
1150	17.32	7.32	7.63
1200	17.82	7.82	8.13

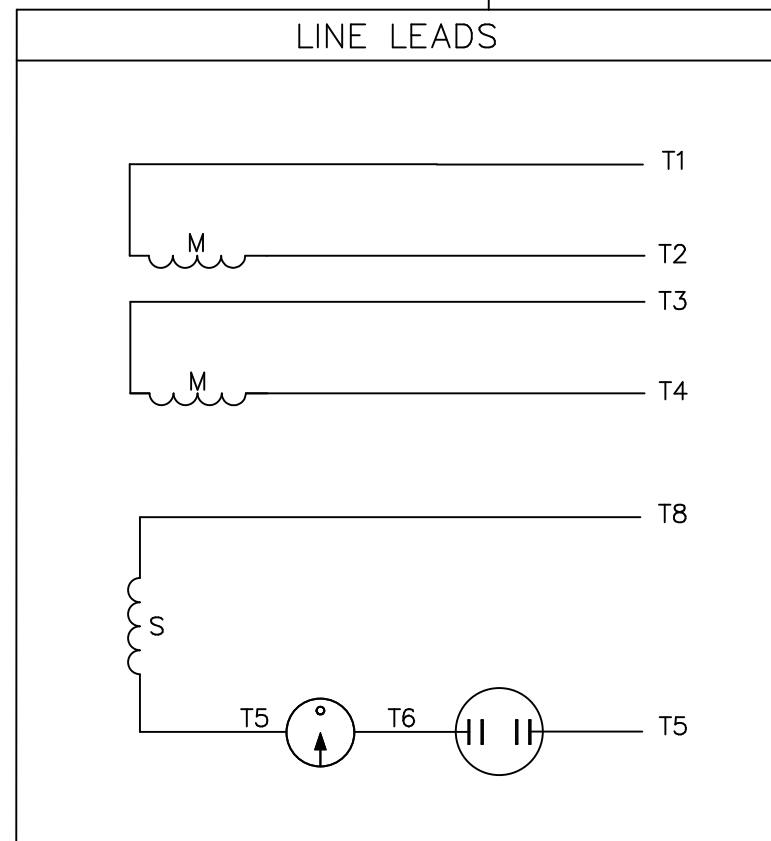
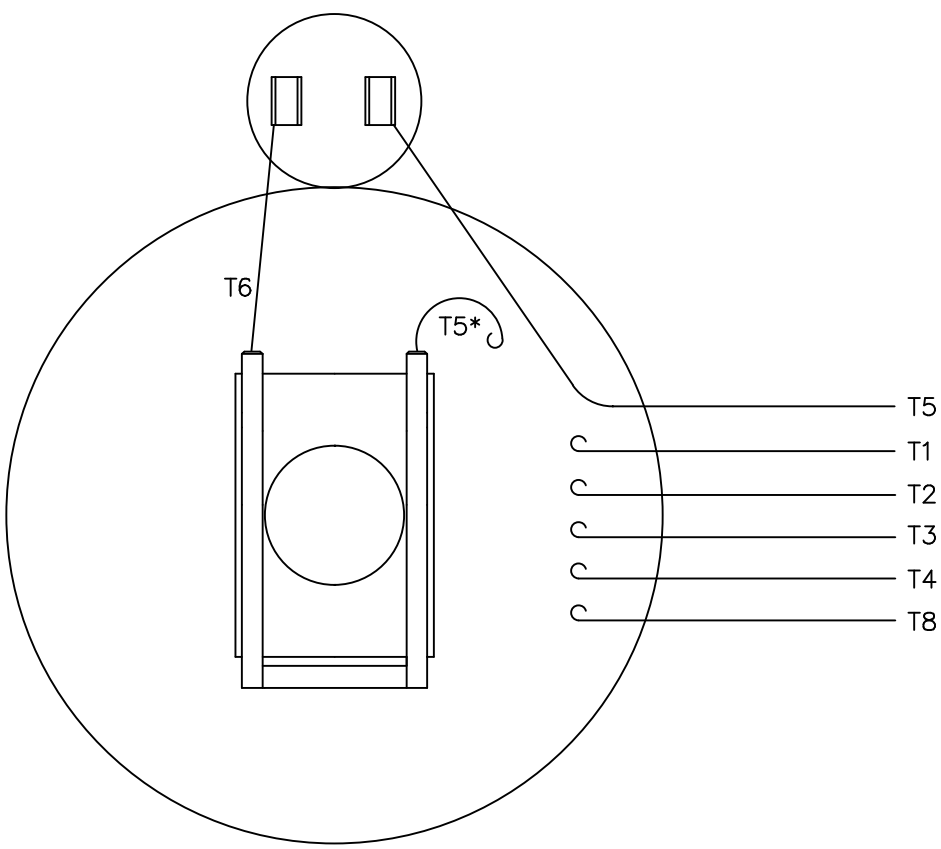
Ø1.13 KNOCKOUTS
(3) REQUIRED



GASKETS THROUGHOUT
MAXIMUM FACE RUNOUT TO BE .004 T.I.R.
MAXIMUM PILOT ECCENTRICITY TO BE .004 T.I.R.
PERMISSIBLE SHAFT RUNOUT TO BE .002 T.I.R.

				TOLERANCES UNLESS SPECIFIED		MARATHON ELECTRIC		DRAWN VV 08/30/07			
				DEC.	INCHES			CHK	YS 08/30/07		
				.X	±.1			APPD			
				.XX	±.03	TITLE		SCALE	1-2		
02	ADDED FLINGER WHEN REQ'D ISAAC 12-2578	GWS	6/11/12	.XXX	±.005	OUTLINE- 180T FRAME DRIP PROOF- RIGID		REF	035472		
01	SHAFT HOLE WAS 3A x .56 DEEP, WARNING NOTE ADDED	JD	05/26/11	.XXXX	±.0005	MAT'L		FMF	184TCDW7047		
NO.	REVISION	BY & DATE	CHK	ANG	FINISH			PREV			
THIS DRAWING IN DESIGN AND DETAIL IS OUR PROPERTY AND MUST NOT BE USED EXCEPT IN CONNECTION WITH OUR WORK ALL RIGHTS OF DESIGN AND INVENTION ARE RESERVED THIS IS AN ELECTRONICALLY GENERATED DOCUMENT - DO NOT SCALE THIS PRINT						RFP	CAD FILE	035557	SIZE	DRAWING NO.	REV.
						DIST			B	035557	02

VIEW FROM OUTSIDE OF MOTOR AT SWITCH END.



	ROTATION FACING LEAD END	L1	L2	JOIN
HIGH VOLT	C.C.W.	T1	T4 T5	T2,T3 T8
	C.W.	T1	T4 T8	T2,T3 T5
LOW VOLT	C.C.W.	T1,T3 T8	T2,T4 T5	-----
	C.W.	T1,T3 T5	T2,T4 T8	-----

* THIS LEAD MAY BE WHITE

		TOLERANCES UNLESS SPECIFIED		MARATHON ELECTRIC		DRAWN RDW 6/30/03	
		DEC.	INCHES	TITLE		CHK	
		.X	±.1	EXT. WIRING DIAGRAM		APPD	
		.XX	±.01	TYPE "C" W/O PROTECTOR		SCALE 1=1	
		.XXX	±.005	MAT'L. DECAL - 004012		REF	
		.XXXX	±.0005	FINISH		FMF 139043	
NO.	REVISION	BY & DATE	CHK	ANG	±1/2'	PREV	
THIS DRAWING IN DESIGN AND DETAIL IS OUR PROPERTY AND MUST NOT BE USED EXCEPT IN CONNECTION WITH OUR WORK ALL RIGHTS OF DESIGN AND INVENTION ARE RESERVED THIS IS AN ELECTRONICALLY GENERATED DOCUMENT - DO NOT SCALE THIS PRINT			RFP	CAD FILE 00506201ME		SIZE A	DRAWING NO. 005062-01ME
			DIST				REV.

